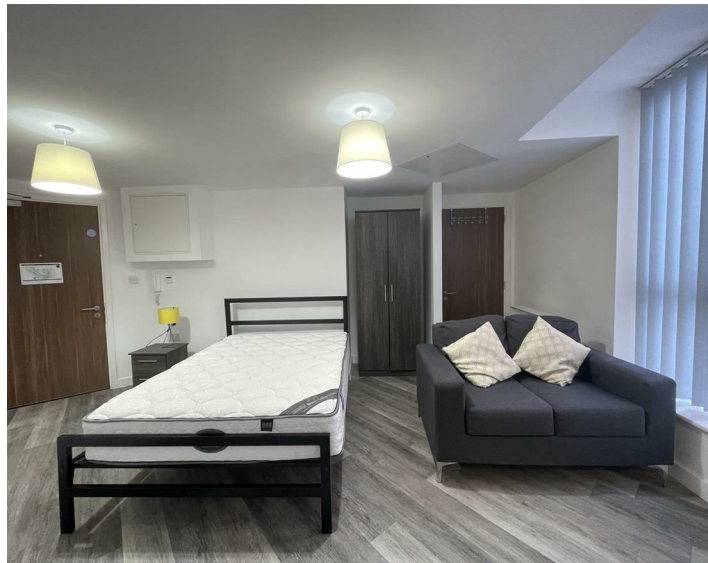




Apt 1 4 Leigh Street, Liverpool, L1 1NT
£675 Per Month

www.
cityresidential
.co.uk



About the Property

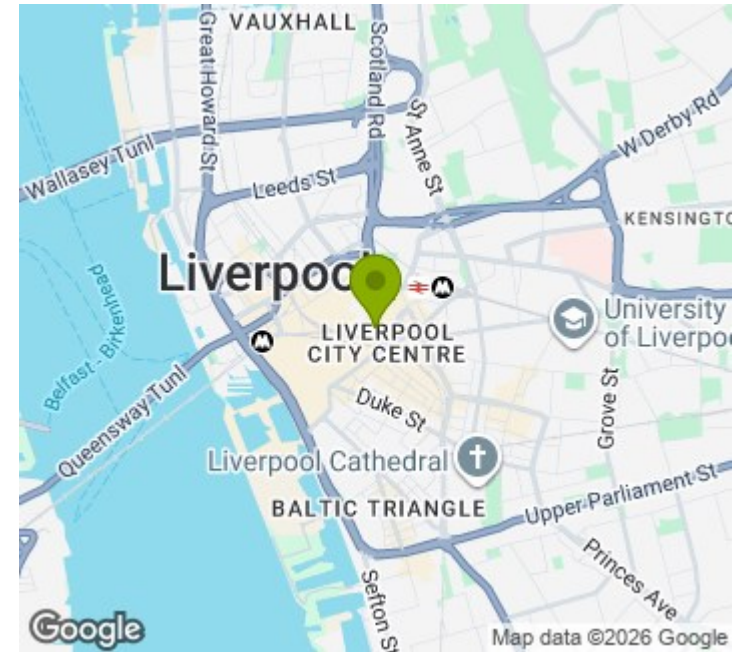
Available Now – Stylish Studio Apartment in Liverpool City Centre

This well-presented studio apartment is situated in the heart of Liverpool City Centre on Leigh Street, offering an ideal location close to all the amenities the city has to offer. Just a short walk from both Liverpool Central and Liverpool Lime Street stations, the property provides excellent transport links for easy commuting.

The accommodation is available on a fully furnished basis and benefits from double glazing and features a kitchen with integrated white goods for modern convenience. Please note, there are no parking facilities at this property.

Don't miss out, call us today on 0151 231 6100 to arrange a viewing!

- Available Now!!
- Amazing Location
- Studio Apartment
- Must Be Viewed!!
- No Parking
- EPC Rating - E
- Council Tax Band - A
- Deposit Payable £778



Energy Efficiency Rating

	Current	Potential
Very energy efficient - lower running costs		
(92 plus) A		
(81-91) B		
(69-80) C		
(55-68) D		
(39-54) E	54	54
(21-38) F		
(1-20) G		
Not energy efficient - higher running costs		
England & Wales	EU Directive 2002/91/EC	



City Residential

81/87 Victoria Street, The Old Haymarket, Liverpool L1 6DG

T: 0151 231 6100 F: 0151 231 6105

E: sales@cityresidential.co.uk



WWW.
cityresidential
.co.uk